

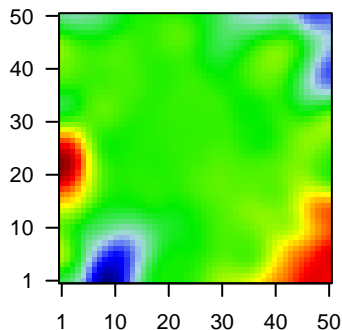
MPI-206

Global Summary

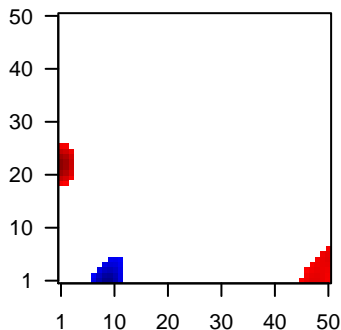
%DE = 0.05
 # genes with fdr < 0.2 = 445 (180 + / 265 -)
 # genes with fdr < 0.1 = 274 (113 + / 161 -)
 # genes with fdr < 0.05 = 215 (83 + / 132 -)
 # genes with fdr < 0.01 = 124 (48 + / 76 -)
 # genes in genesets = 13152

<FC> = 0
 <t-score> = 0.04
 <p-value> = 0.28
 <fdr> = 0.95

Portrait



Regulated Metagenes



Global Genelist

Rank	ID	log(FC)	fdr	p-value	Description
1	201123_s_at	-1.82	2e-16	9e-13	1 x 43 eukaryotic translation initiation factor 5A [Source:HGNC Syml
2	202310_s_at	-1.68	2e-16	9e-13	9 x 0 collagen type I alpha 1 chain [Source:HGNC Symbol;Acc:HG
3	202404_s_at	-1.74	2e-16	9e-13	9 x 0 collagen type I alpha 2 chain [Source:HGNC Symbol;Acc:HG
4	211161_s_at	-1.54	2e-16	9e-13	9 x 0 collagen type III alpha 1 chain [Source:HGNC Symbol;Acc:HK
5	218723_s_at	-1.55	2e-16	9e-13	45 x 49 regulator of cell cycle [Source:HGNC Symbol;Acc:HGNC:203
6	219360_s_at	2.4	4e-16	4e-11	0 x 20 transient receptor potential cation channel subfamily M memt
7	212592_at	-1.39	2e-15	7e-10	45 x 49 joining chain of multimeric IgA and IgM [Source:HGNC Symb
8	206771_at	2.25	3e-14	7e-09	39 x 22 uroplakin 3A [Source:HGNC Symbol;Acc:HGNC:12580]
9	201690_s_at	-1.27	3e-13	1e-08	49 x 37 tumor protein D52 [Source:HGNC Symbol;Acc:HGNC:12005]
10	214890_s_at	2.09	2e-12	1e-08	7 x 20 family with sequence similarity 149 member A [Source:HGNC
11	209995_s_at	1.23	2e-12	1e-08	46 x 49 T cell leukemia/lymphoma 1A [Source:HGNC Symbol;Acc:HC
12	202478_at	-1.53	2e-12	1e-08	49 x 40 tribbles pseudokinase 2 [Source:HGNC Symbol;Acc:HGNC:3
13	213416_at	-1.46	3e-12	1e-08	49 x 34
14	202403_s_at	-0.98	3e-12	1e-08	9 x 0 collagen type I alpha 2 chain [Source:HGNC Symbol;Acc:HG
15	204580_at	-1.69	3e-12	6e-08	3 x 31 matrix metalloproteinase 12 [Source:HGNC Symbol;Acc:HGNC
16	210809_s_at	-1.64	9e-12	6e-08	9 x 0 periostin [Source:HGNC Symbol;Acc:HGNC:16953]
17	209031_at	-1.63	9e-12	6e-08	11 x 8 cell adhesion molecule 1 [Source:HGNC Symbol;Acc:HGNC:
18	211644_x_at	1.72	1e-11	8e-08	0 x 1 immunoglobulin kappa variable 3-20 [Source:HGNC Symbol;
19	219955_at	2	2e-11	9e-08	17 x 14 LINE1 type transposase domain containing 1 [Source:HGNC
20	204429_s_at	-1.48	3e-11	9e-08	0 x 49 solute carrier family 2 member 5 [Source:HGNC Symbol;Acc:

Global Geneset Analysis

Rank	GSZ	p-value	#all	Geneset
<i>Overexpressed</i>				
1	12.93	NULL	403	Chr Chr 14
2	8.69	NULL	833	Chr Chr 19
3	8.2	NULL	18	LymphomaRIGHT_ABC UP
4	7.32	NULL	689	Chr Chr 3
5	6.92	NULL	85	Lymphoma leukemia_BCL2 DN_BCL6 UP
6	6.87	NULL	3767	Chromatin cell peripheral blood_6_EnhG
7	6.31	NULL	184	Chr Chr 18
8	6.28	NULL	173	Lymphoma tectora_Light zone signature
9	6.08	NULL	693	Chromatin cell peripheral blood_3_TxFlnk
10	5.85	NULL	85	Lymphoma tectora_DLBCL UP
11	5.62	NULL	4261	Lymphoma tectoraOPP_Txn_transition
12	5.49	NULL	10	Lymphoma tectoraASCQUE_ABC UP
13	5.44	NULL	10	Lymphoma tectoraABC UP
14	5.42	NULL	3682	Chromatin tectora killer cells peripheral blood_6_EnhG
15	5.37	NULL	55	GSEA C2DIRMEIER_LMP1_RESPONSE_EARLY
16	5.02	NULL	4208	Chromatin tectora peripheral blood_6_EnhG
17	4.9	NULL	22	Lymphoma tectoraAVE_NFKB BL DN
18	4.9	NULL	36	GSEA C2REACTOME_PACKAGING_OF_TELOMERE_ENDS
19	4.88	NULL	2450	Chromatin tectora_EnhG
20	4.85	NULL	25	BP antibacterial humoral response
<i>Underexpressed</i>				
1	-12.75	NULL	214	Lymphoma tectoraENZ_Stromal signature 1
2	-11.4	NULL	335	GSEA C2SCHUETZ_BREAST_CANCER_DUCTAL_INVASIVE_UP
3	-11.11	NULL	63	GSEA C2ANASTASSIOU_CANCER_MESENCHYMAL_TRANSITION_SIGN
4	-10.88	NULL	192	Lymphoma tectora_Dark zone signature
5	-10.02	NULL	78	Melanoma tectora_CAF-cell specific genes
6	-9.35	NULL	196	HM HALLMARK_EPITHELIAL_MESENCHYMAL_TRANSITION
7	-9.26	NULL	249	GSEA C2ONDER_CDH1_TARGETS_2_UP
8	-9.21	NULL	5682	Lymphoma tectoraOPP_Weak_promoter
9	-9.08	NULL	60	GSEA C2TURASHVILI_BREAST_LOBULAR_CARCINOMA_VS_LOBULAR
10	-8.92	NULL	197	GSEA C2NABA_CORE_MATRISOME
11	-8.84	NULL	58	GSEA C2TURASHVILI_BREAST_LOBULAR_CARCINOMA_VS_DUCTAL
12	-8.83	NULL	18	GSEA C2FARMER_BREAST_CANCER_CLUSTER_5
13	-8.78	NULL	431	GSEA C2SOBERT_OLIGODENDROCYTE_DIFFERENTIATION_UP
14	-8.75	NULL	207	GSEA C2WANG_SMARCE1_TARGETS_UP
15	-8.71	NULL	137	GSEA C2ROSTY_CERVICAL_CANCER_PROLIFERATION_CLUSTER
16	-8.48	NULL	247	GSEA C2BOQUEST_STEM_CELL_UP
17	-8.36	NULL	176	GSEA C2PICCALUGA_ANGIOIMMUNOBLASTIC_LYMPHOMA_UP
18	-8.29	NULL	11	MF platelet-derived growth factor binding
19	-8.26	NULL	34	GSEA C2CLASPER_LYMPHATIC_VESSELS_DURING_METASTASIS_DN
20	-8.07	NULL	250	GSEA C2HORIUCHI_WTAP_TARGETS_DN

p-values

